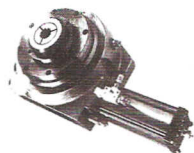
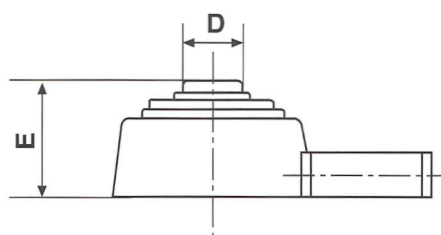
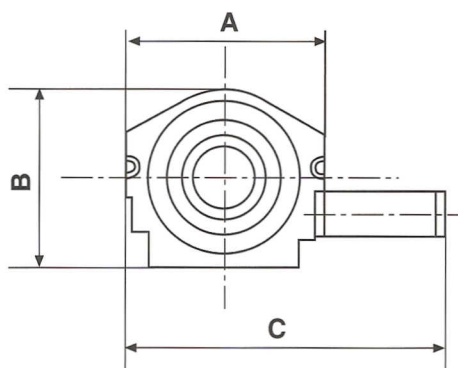
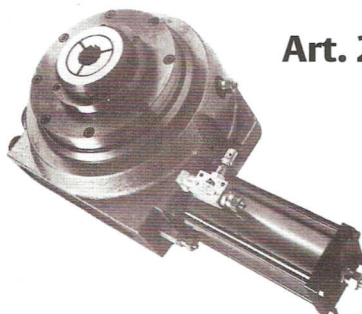


## Divisori pneumatici chiudipinza Pneumatic indexing fixtures collet chucks

Art. 2500/1



Art. 2500/2



### Misure d'ingombro Outer chucks dimensions



Serie	Art.	Presca max	A	B	C	D	E	Serie	Pinza/Collet
DP	2500/1	Ø 18	198	160	290	55	108	PZ	TR15-140E
DP	2500/2	Ø 42	260	230	420	80	150	PZ	TR42-173E

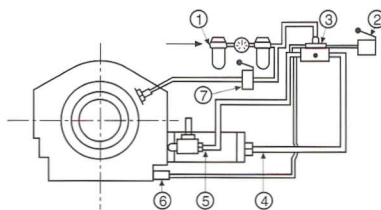
Possibilità di 3 - 4 - 6 - 8 - 12 - 24 divisioni (altre divisioni a richiesta).  
Range = 3 - 4 - 6 - 8 - 12 - 24 indexing (other upon customer specification).  
Comando manuale e automatico per essere inserito in ciclo con la macchina operatrice.  
Manual or automatic for direct cyclic with operating machine Manual or Micro.

#### Schema di montaggio in ciclo con la macchina operatrice

- 1) alimentazione
- 2) pulsante o micro inizio ciclo
- 3) Cassetto distribuzione per funzionamento manuale solo a pressione per funzionamento automatico 1/2 elettrico e 1/2 a depressione
- 4) alimentazione rotazione
- 5) Alimentazione caricamento
- 6) alimentazione inversione ciclo
- 7) valvola (normalmente chiusa) a 3 vie per chiusura pinza

#### Pneumatic connection for use in cycle with operating machine:

- 1) Inlet air
- 2) push button or microswitch for starting cycle
- 3) distribution valve manual operation with pressure only automatic operation: 1/2 electric and 1/2 with depression
- 4) rotation feeding
- 5) loading feeding
- 6) cycle inversion feeding
- 7) collet locking 3 way valve (normally closed)



A richiesta: bicchieri o riduzioni per altri tipi di pinze con relativa cuffia.  
Upon customer specification: reduction sleeves for other collets and related chuck nuts.